

MATERIALS & TOOLS

Materials:

- Wood

Note: The projects seen in this article are made from Walnut and Maple. You may choose different woods, even plywood. For best success, keep the wood's thickness between 1/4" and 1/2".

Turkey Design

Bottom 3/8" x 5" x 2"

Feet 3/8" x 3" x 4"

Wings 3/8" x 3" x 4 1/2"

Head/Breast 3/8" x 4 3/4" x 2 1/2"

Tail Feathers 3/8" x 5 1/4" x 5 1/4"

Sheaves/Pumpkin 3/8" x 4 1/2" x 4 1/2"

Ghost 3/8" x 5 1/2" x 4 3/4"

Napkin Holder Back 3/8" x 4" x 4"

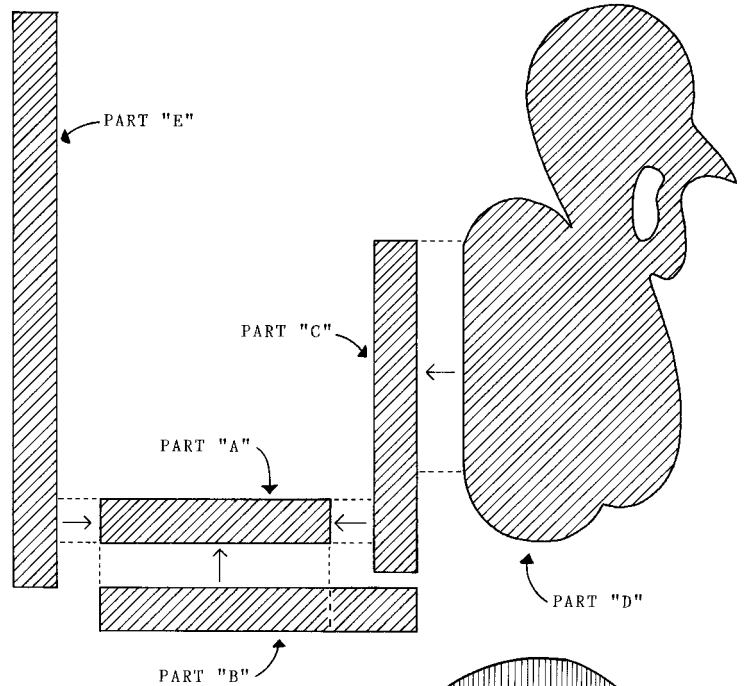
- Temporary bond spray adhesive
- Wood glue or epoxy, depending on wood choices
- Sandpaper, 100, 150, 200 grit
- Clear finish of choice or paint
- 4 adhesive felt pads

Tools:

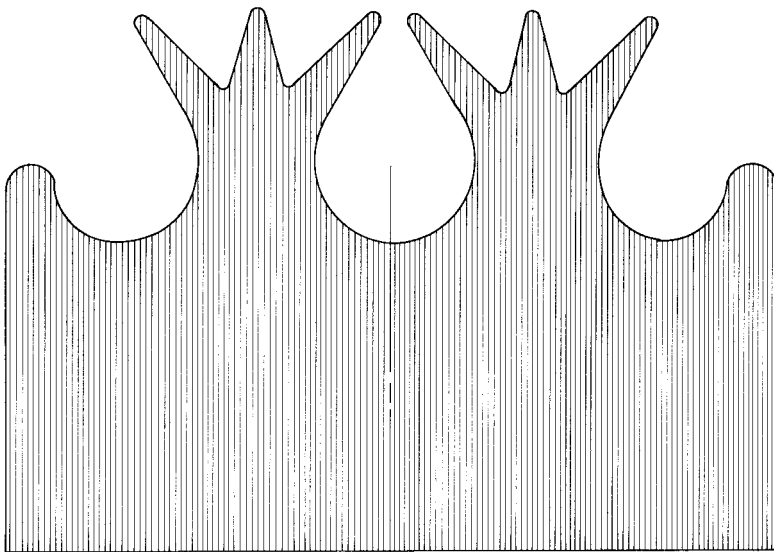
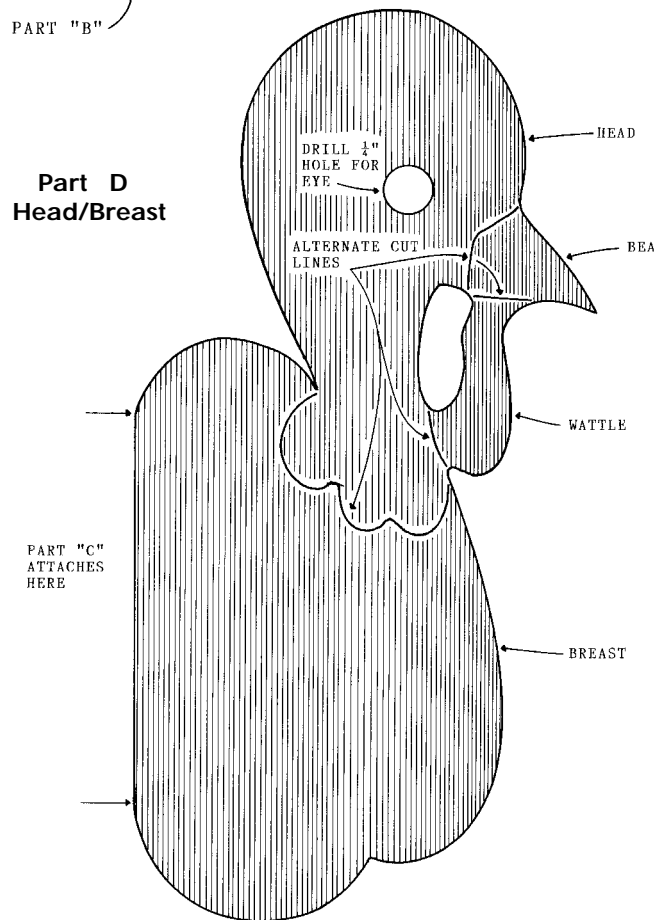
- #2-#5 reverse tooth
- Drill or drill press with 1/4" bit
- Palm sander
- 2 6" wood clamps

Photocopy at 100%

Assembly Diagram



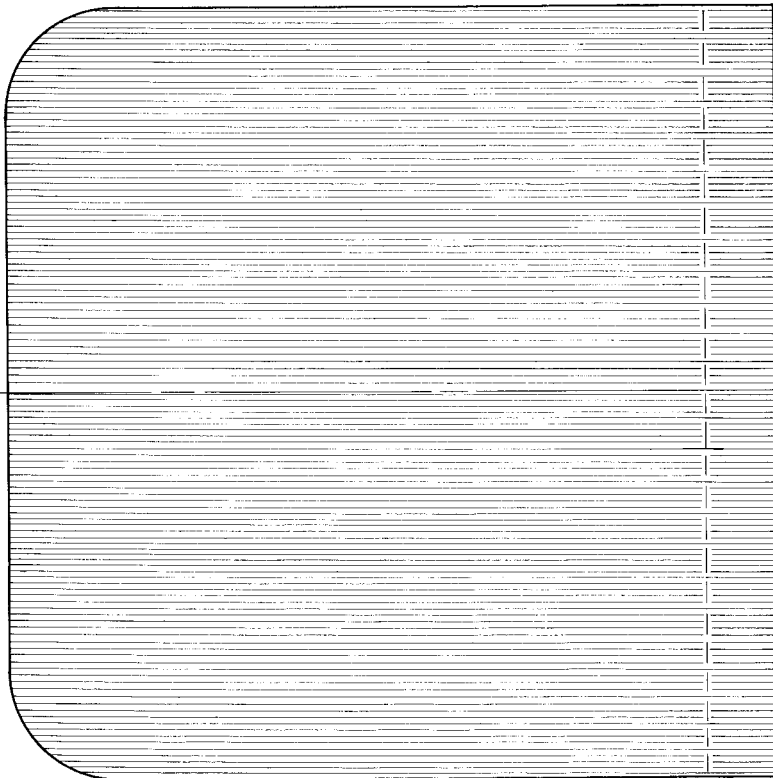
Part D Head/Breast



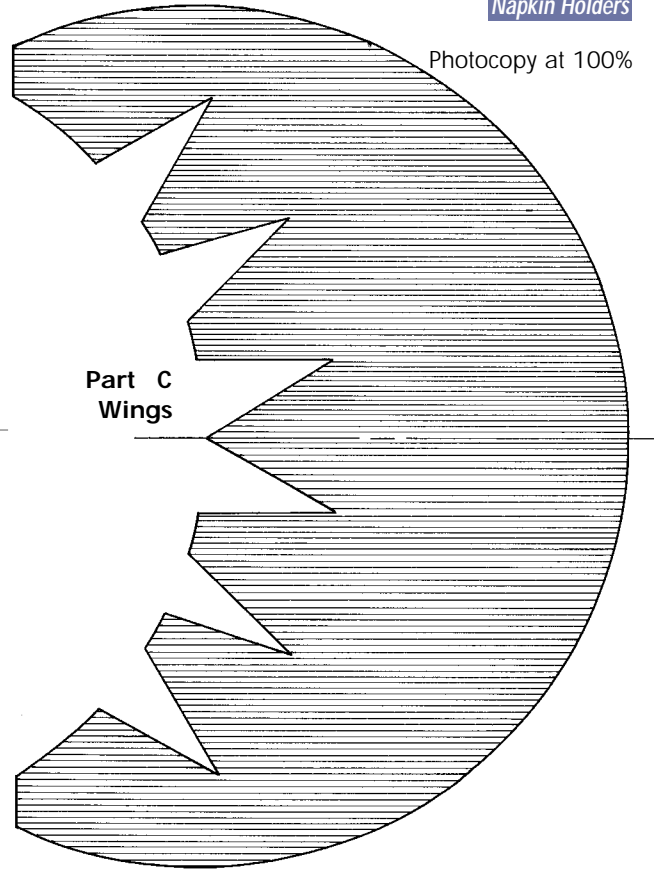
**Part B
Feet**

Photocopy at 100%

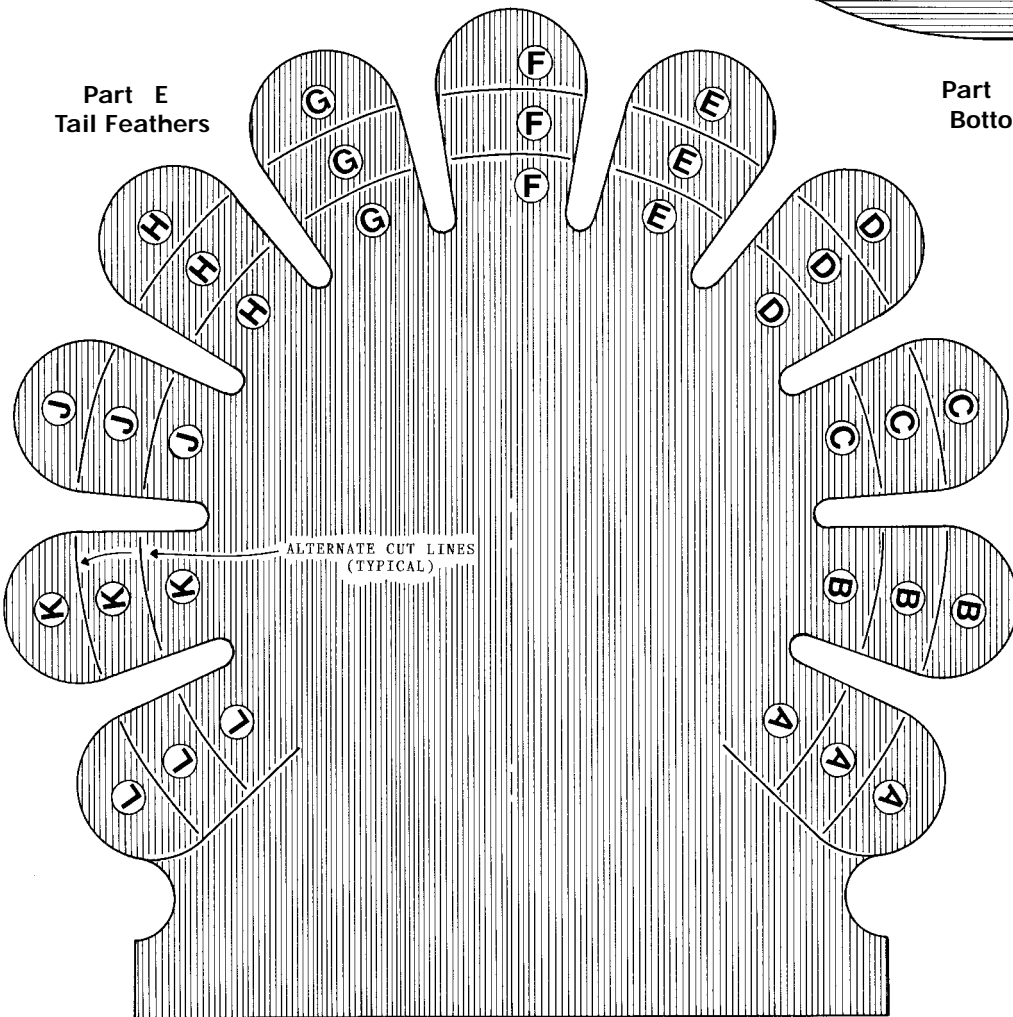
Part F
Back



Part C
Wings



Part E
Tail Feathers



Part A
Bottom

